



by Falcon Cues

2014 CATALOG v1

RAIDCUES.COM

COLORZ S

INTRODUCTION

Colorful and vibrant cue design with low deflection shaft technology!

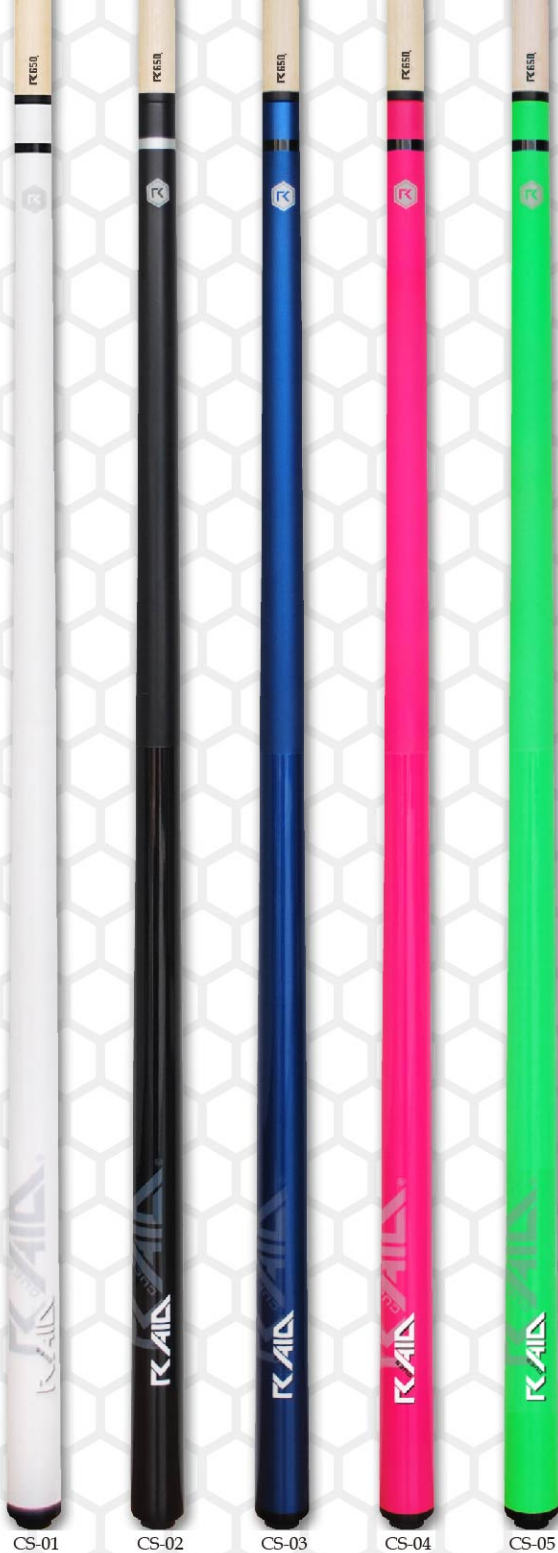
PRODUCT FEATURES

- Selected Canadian maple shaft
- R650 low deflection technology
- Professional taper shaft
- 13mm 5 layer leather tip
- 10mm Juma ferrule
- Matching colorful joint collar
- 3.5 thread quick release joint/inserts
- Pop color variations with fluorescent hint
- Matt finish treated forearm with gloss finish handles
- Adjustable weight system
- Standard weight of 19oz

K/AID
SINCE 1982

by Falcon Cues

COLORZ SERIES



CS-01

CS-02

CS-03

CS-04

CS-05

COLORZ H

INTRODUCTION

Contemporary and simplistic designs that stands out from the rest! The RAID ColorZ H series features unique cue design with contrasting color variations plus a low deflection shaft that will improve your game!

PRODUCT FEATURES

- Selected Canadian maple shaft
- R650 low deflection technology
- Professional taper shaft
- 13mm 5 layer leather tip
- 10mm Juma ferrule
- Hand polished stainless steel joint
- 3.5 thread quick release joint/inserts
- Pearl white/black base forearm with contrasting color points
- 3D bubble grip
- Adjustable weight system
- Standard weight of 19oz

COLORZ SERIES

by Falcon Cues



CH-01

CH-02

CH-03

CH-04

CH-05



Elemental

Earth

Water

Wind

Flame

INTRODUCTION

The design of the Elemental Series is derived from nature where each cue design represents a unique element, Earth, Water, Wind and Flame.

PRODUCT FEATURES

- Selected Canadian maple shaft
- Professional taper shaft
- 13mm dual layer leather tip
- White ferrule
- Black joint collar
- 18 thread joint/inserts
- Canadian maple stained handle
- Unique forearm/butt sleeve decal designs with natural wood combination
- Adjustable weight system
- Standard weight of 19oz

K/AID
by Falcon Cues

ELEMENTAL SERIES

Earth



Water



Wind



Flame



Spears

INTRODUCTION

The Spears Series consists of elegant and long point designs on the forearm showcasing four different spear like designs with matching butt sleeve. The handle of the cue is made of curly maple stained in four different variations.

PRODUCT FEATURES

- Selected Canadian maple shaft
- Professional taper shaft
- 13mm dual layer leather tip
- White ferrule
- Hand polished stainless steel joint
- 18 thread joint/inserts
- Curly maple stained handle
- Unique and elegant spear like forearm/butt sleeve decal designs
- Adjustable weight system
- Standard weight of 19oz

SPEARS SERIES

by Falcon Cues
KALDA

SR-01

SR-02

SR-03

SR-04



Jump

Break

Break Cue

- Selected Canadian maple shaft
- 13.5mm break shaft
- Black phenolic ferrule
- Hand polished stainless steel joint
- 18 thread joint/inserts
- Birdseye maple spliced rosewood
- Standard weight of 19oz

Jump Cue

- Selected Canadian maple shaft
- Professional jump shaft taper - 14mm
- G10 green phenolic tip
- 10mm white ferrule
- 2.5T easy-loc joint system
- Maple spliced rosewood

K/AID
by Falcon Cues
JC & BK SERIES



G10 tip



Precision



Detail



Fiber tip+ferrule



Birdseye wood



Excellent

JC01

BK01

HOUSE CUE

PRODUCT FEATURES

- Selected Canadian maple shaft
- 13mm two layers calf leather tip
- 1" white ferrule
- Maple splice hardwood
- Available in 57", 52", 48", 42", 36" length



HC57

HC52

HC48

HC42

HC36

HOUSE CUE SERIES





Center of attention! Unique matt/gloss finish treatment combination with various colors



3D bubble grip allows for more direct feel



Matching colorful joint collar which brings out the overall design concept of the series



Selected Canadian maple shaft with 13mm pro taper diameter



R650 low deflection shaft on selected series and available for purchase separately

Please visit our website for warranty information
and to locate your nearest RAID dealer

RAIDCUES.COM